



A Comprehensive Solution for  
Online Language Education



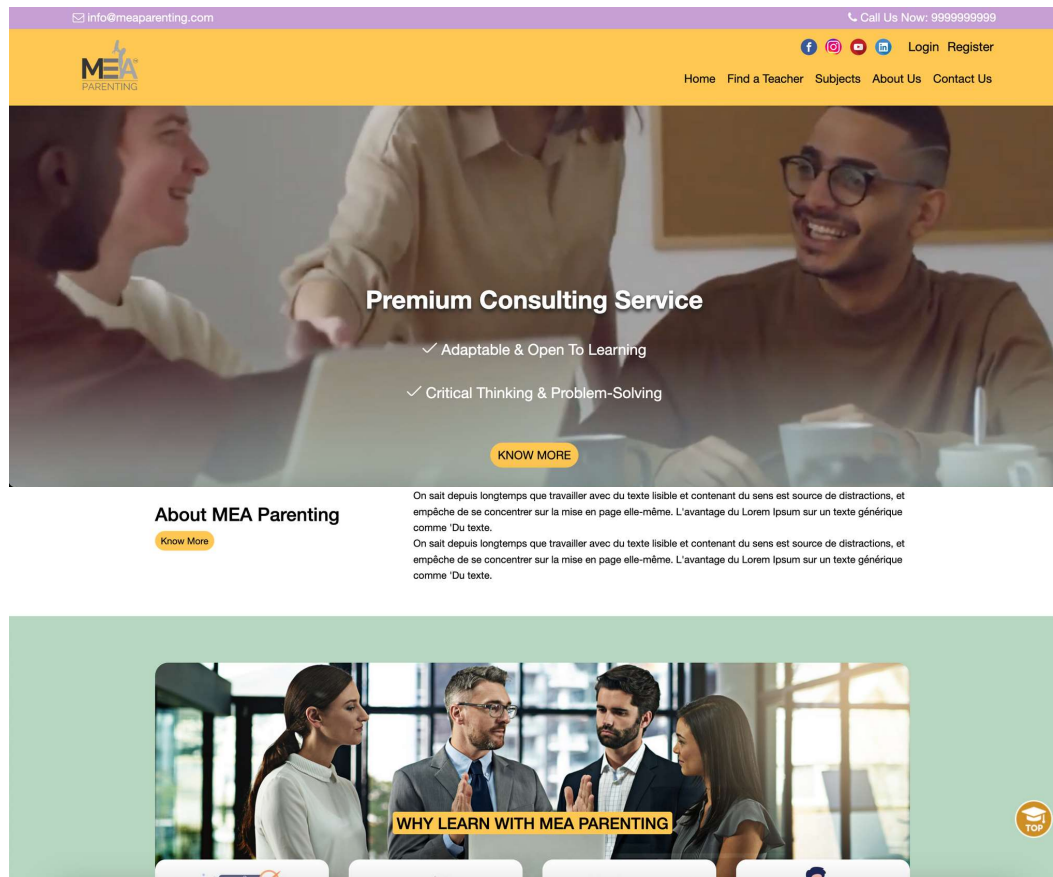
Learning Management  
System

[www.delphintechologies.com](http://www.delphintechologies.com)



# Project Summary

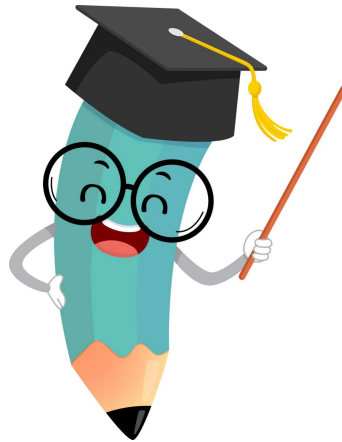
Development of a comprehensive Language Learning Management System (LMS) for **MEA Parenting**, an online language education platform.



Caters to the unique needs of language teachers and students, offering a seamless learning experience.



# Requirements



- Customized website designs to provide an aesthetically pleasing and engaging user interface.
- Dedicated backends for teachers to manage their profiles, availability, pricing, and communicate with students.
- Student Dashboard to book sessions, apply for courses, take tests, and communicate with teachers.



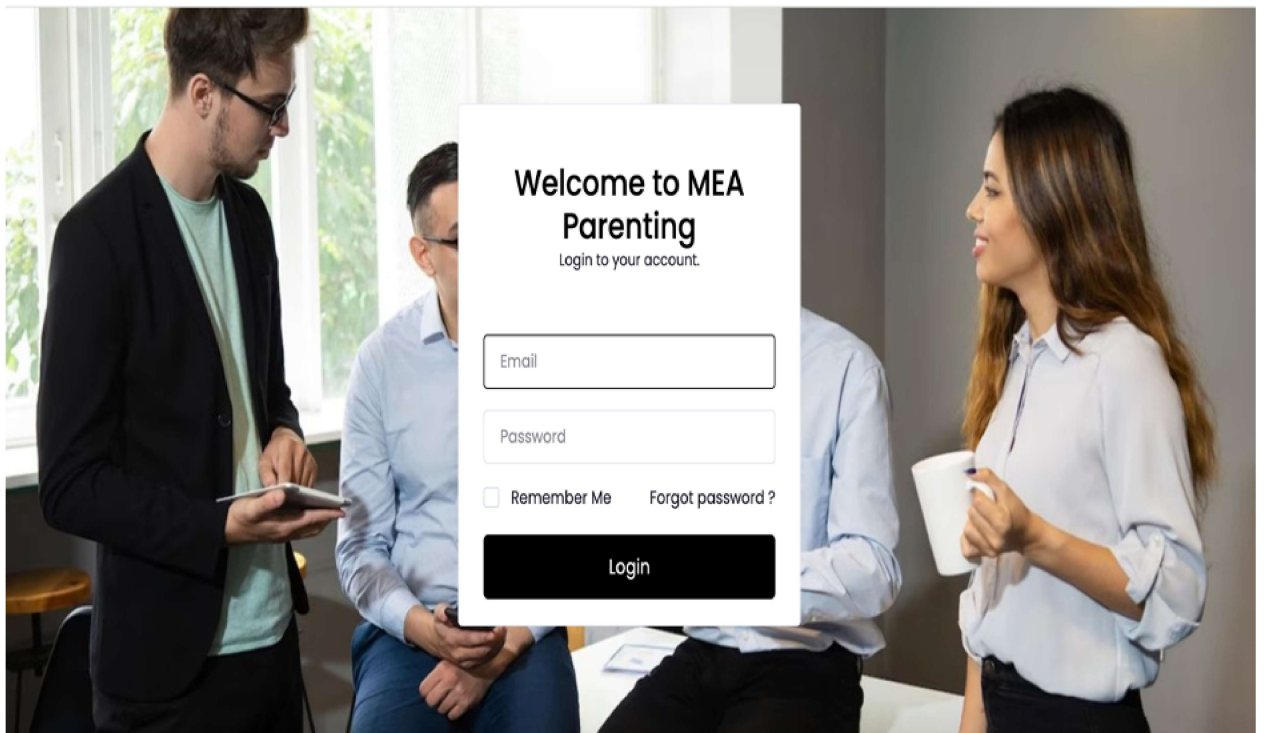
# System Design & Development

**Framework:** Laravel

**Duration:** 3 Months

**Scope of Work:**

- Front-end Development
- Backend Development
- Zoom API Integration
- Stripe Payment Gateway Integration





# Teacher Backend

Designed to empower language instructors, offering them the tools they needed to manage their profiles and courses effectively.



- **Profile Management:** Create and edit their profiles
- **Availability Management:** Can set their availability for sessions.
- **Pricing Management:** Assign pricing for their language courses
- **Communication Tools:** Engage with students, answer inquiries, and provide essential course-related information

# Student Backend

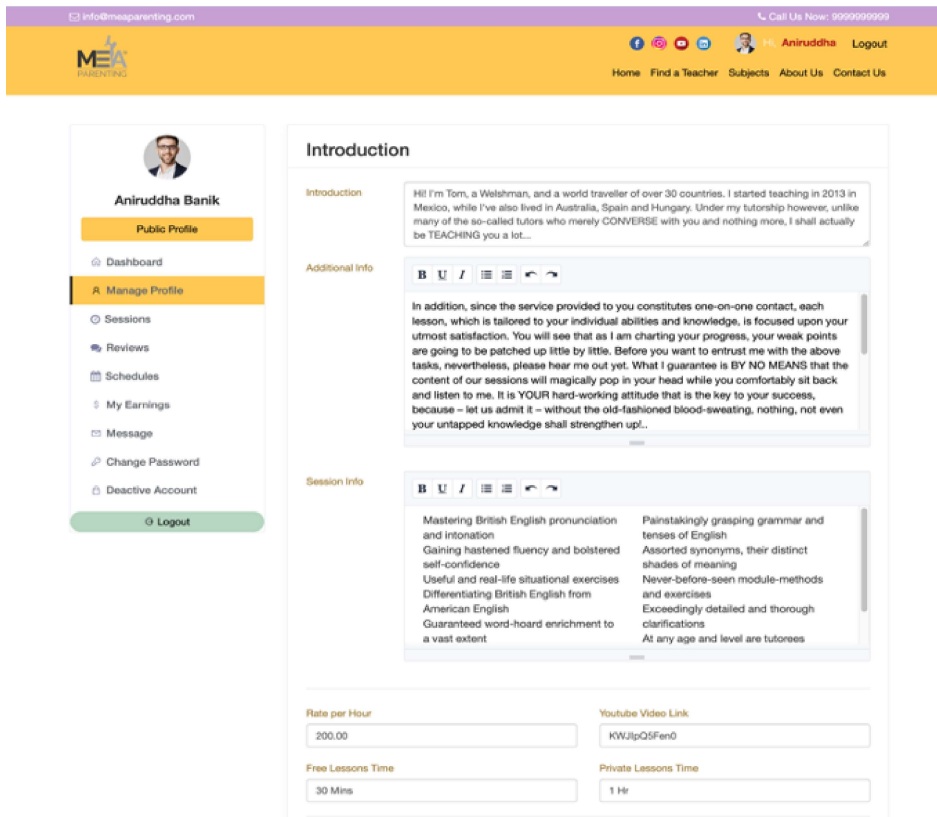
The Student Backend was meticulously crafted to enhance the learning experience for students.



- **Session Booking:** Effortlessly book sessions with their chosen teachers
- **Course Application:** Option to apply for language courses
- **Testing and Certification:** Undertake tests related to their language courses and conveniently download certificates upon completion.



# Student Backend



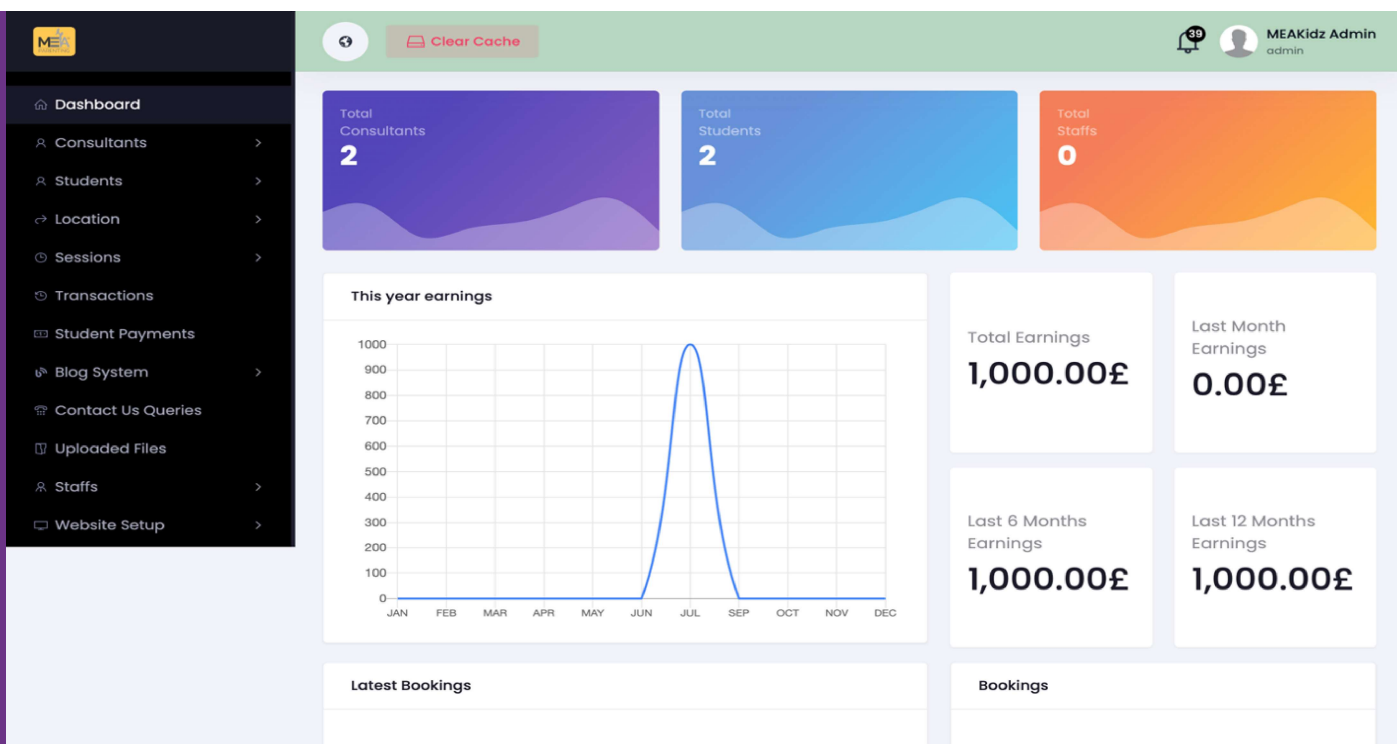
The screenshot displays the MEA Parenting Student Backend interface. At the top, there is a navigation bar with the email 'info@meaparenting.com', a call-to-action 'Call Us Now: 9999999999', and a user profile for 'Aniruddha' with a 'Logout' button. Below this is a sidebar menu for 'Aniruddha Banik' with options: 'Public Profile', 'Dashboard', 'Manage Profile', 'Sessions', 'Reviews', 'Schedules', 'My Earnings', 'Message', 'Change Password', 'Deactive Account', and a 'Logout' button at the bottom. The main content area is titled 'Introduction' and contains a text box with a welcome message from Tom, a Welshman. Below this is a 'Session Info' section with two columns of text describing the service. At the bottom, there are input fields for 'Rate per Hour' (200.00), 'Youtube Video Link' (KWJlpQSFen0), 'Free Lessons Time' (30 Mins), and 'Private Lessons Time' (1 Hr).

- **Communication Tools:** Students can initiate communication with teachers, seek assistance, and ask questions related to their courses
- **Payment Gateway:** Our Language Learning Management System (LMS) offers students a robust payment gateway integration that provides multiple payment options.



# Master Admin

The Backend serves as the central hub for system management, providing robust controls over various aspects of the platform.

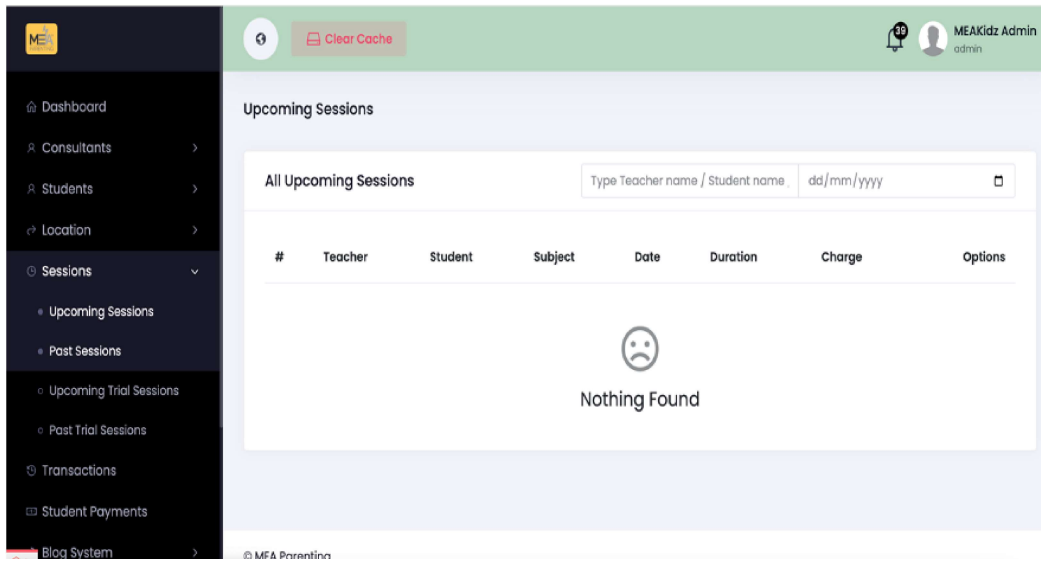


- **User Management:** Admins can manage user accounts efficiently, including both teachers and students
- **Booking Management:** Admins have the authority to oversee and manage course bookings, facilitating a well-organized system.





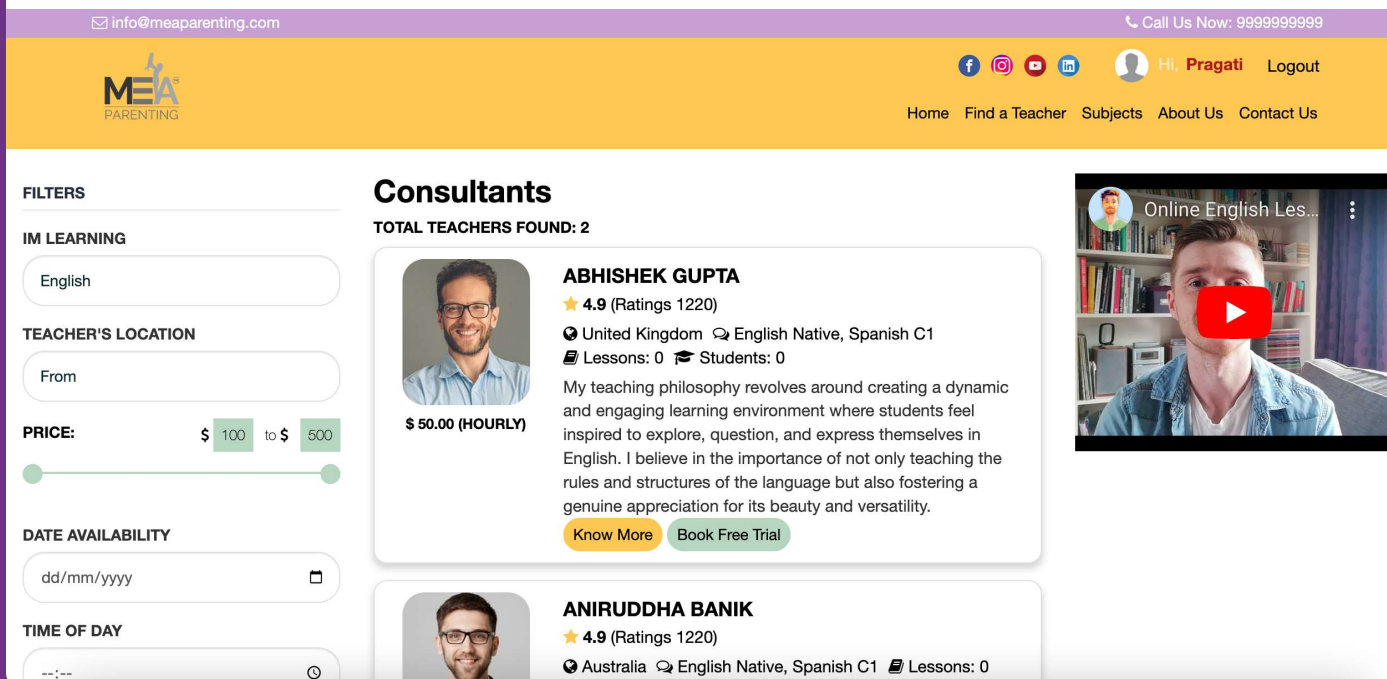
# Master Admin



- **Customization Options:** Supports customizing the platform's functionality without requiring extensive coding
- **Reporting:** Access to vital data and generate reports to gain insights into student test results and course performance
- **Feedback Management:** Oversee and manage student feedback and reviews for courses,

# Standout features

- Integration of a course selling platform.
- Integration automated the process of generating dedicated Zoom links for scheduled courses
- Offering a seamless experience for both teachers and students.



The screenshot displays the MEA Parenting website interface. At the top, a purple header contains the contact email 'info@meaparenting.com' and a call-to-action 'Call Us Now: 9999999999'. Below this is a yellow navigation bar with the MEA Parenting logo, social media icons, and a user profile 'Hi, Pragati' with a 'Logout' link. The main content area is divided into three sections: 'FILTERS' on the left, 'Consultants' in the center, and a video player on the right.

**FILTERS**

- IM LEARNING**: English
- TEACHER'S LOCATION**: From
- PRICE**: \$ 100 to \$ 500
- DATE AVAILABILITY**: dd/mm/yyyy
- TIME OF DAY**: --:--

**Consultants**

TOTAL TEACHERS FOUND: 2

**ABHISHEK GUPTA**  
★ 4.9 (Ratings 1220)  
📍 United Kingdom 🗨 English Native, Spanish C1  
📅 Lessons: 0 🎓 Students: 0  
My teaching philosophy revolves around creating a dynamic and engaging learning environment where students feel inspired to explore, question, and express themselves in English. I believe in the importance of not only teaching the rules and structures of the language but also fostering a genuine appreciation for its beauty and versatility.  
[Know More](#) [Book Free Trial](#)

**ANIRUDDHA BANIK**  
★ 4.9 (Ratings 1220)  
📍 Australia 🗨 English Native, Spanish C1 📅 Lessons: 0

**Online English Les...**



# The Process



**BOOK NOW**



1

**Automated Course Booking:** When a student books a language course, the system automatically processes the booking

2

**Dedicated Zoom Links:** Upon successful booking, the system generated dedicated Zoom links for each scheduled session

3

**Streamlined Communication:** The integration streamlined communication, allowing teachers and students to easily access and join the Zoom sessions,

# **Security Measures**



- **Email Verification:** Users are required to verify their email addresses & approval from the admin during the registration process.
- **Dedicated Links:** Each student is provided with a dedicated, secure link to access their enrolled courses, ensuring privacy and security.
- **Data Encryption:** Sensitive data, such as user credentials and personal information, were encrypted to protect against data breaches and unauthorized access.



India | USA | Hong Kong



info@delphintechologies.com